



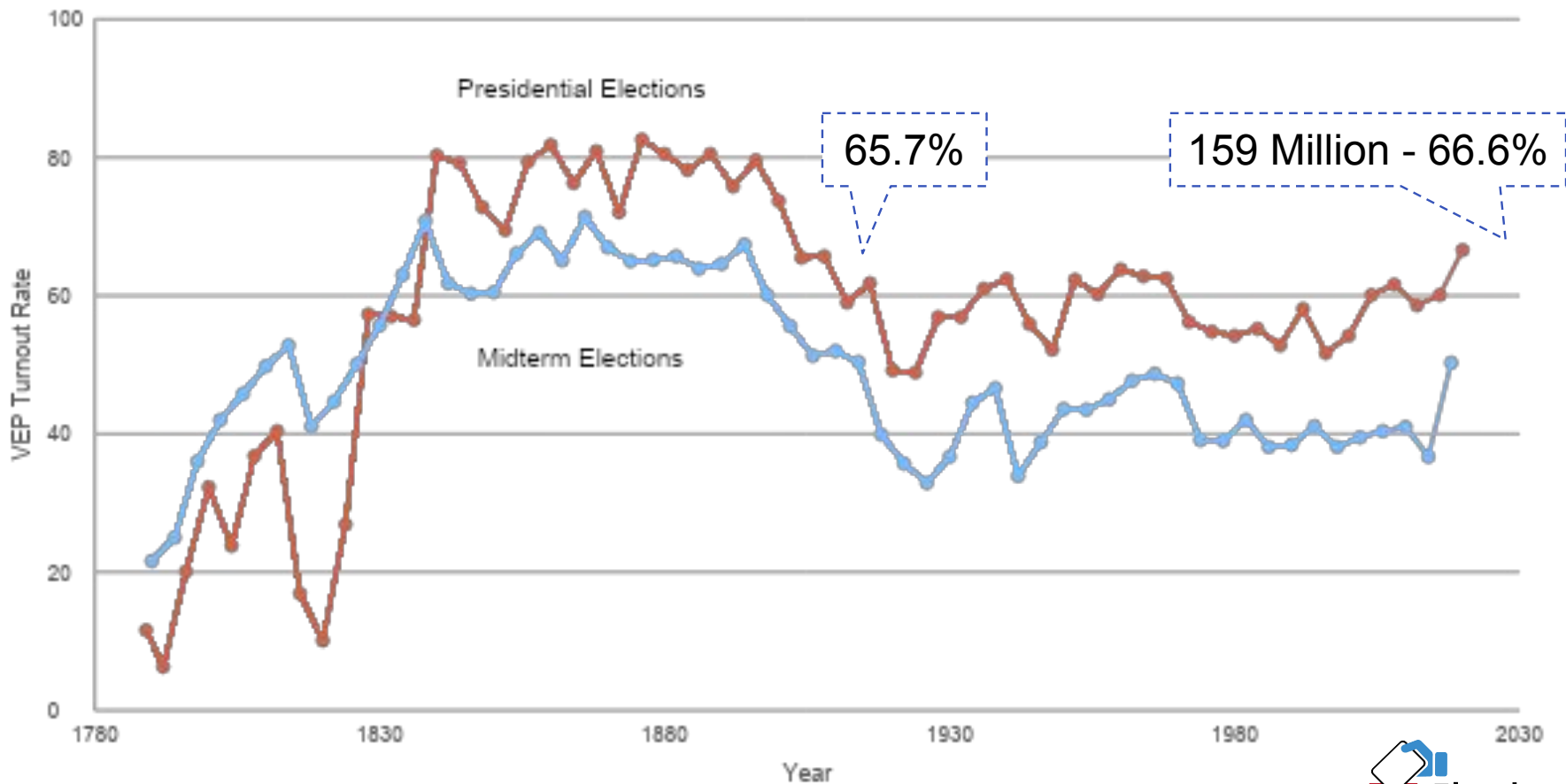
VOTING IN THE 2020 GENERAL ELECTION

Michael McDonald
Professor of Political Science
University of Florida
www.electproject.org • [@ElectProject](https://twitter.com/ElectProject)

Highest Turnout Rate Since 1900

2

United States VEP Turnout Rates 1789-2020



Voting-Eligible Population

3

Voting Eligible Population Components

- **Voting-Age Population (Domestic Population Age 18+)**
- **Subtract Non-citizens**
- **Subtract Ineligible Felons Depending On State Law**
- **For national number, add estimate of overseas eligible population**

Does not include

- **Post-correctional system disenfranchised felons**
- **Persons found incompetent by a court of law**

Differs from voter registration turnout rates

Why a Modern Record Turnout?

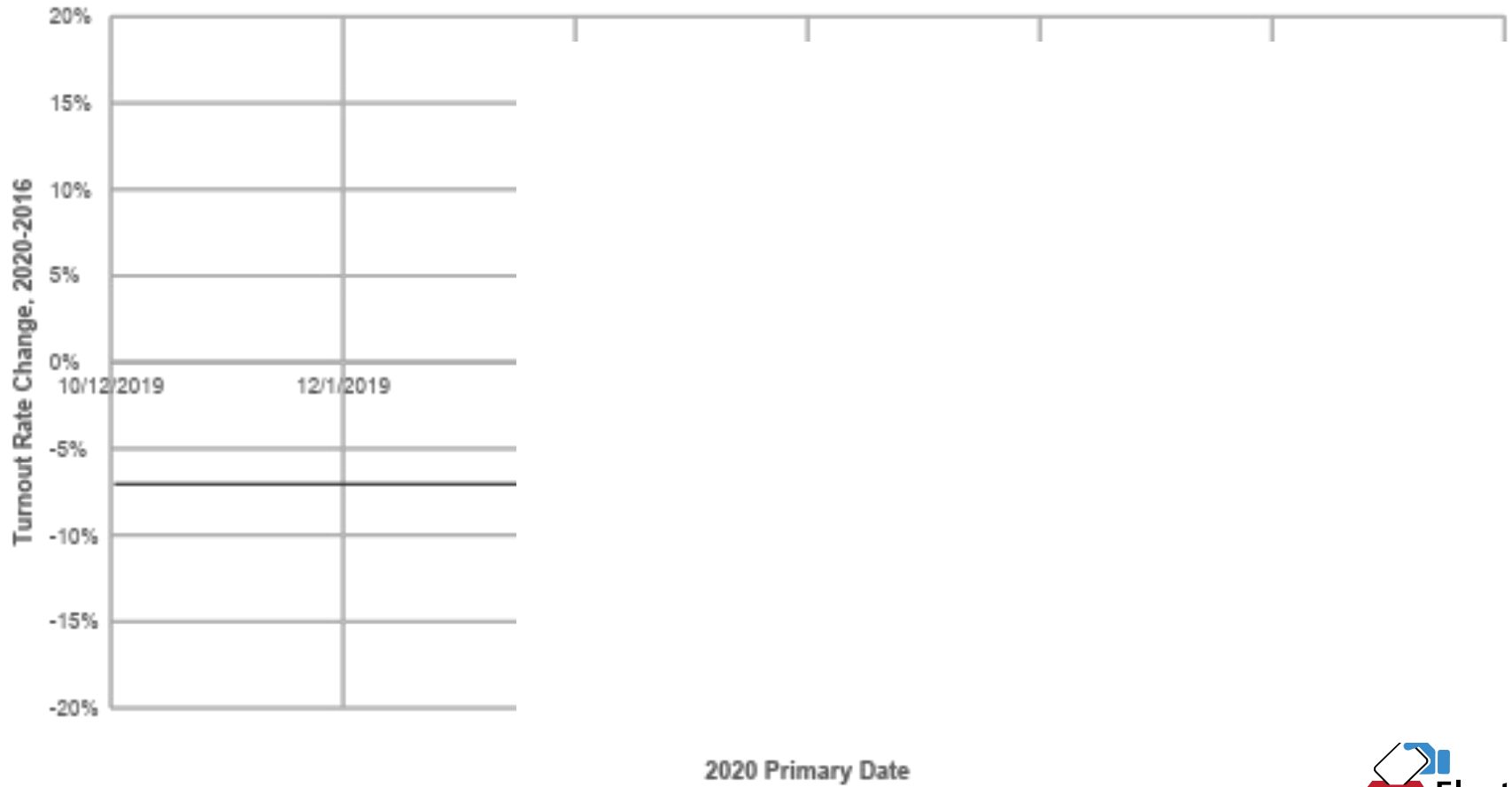
4



Running Elections During the Pandemic

5

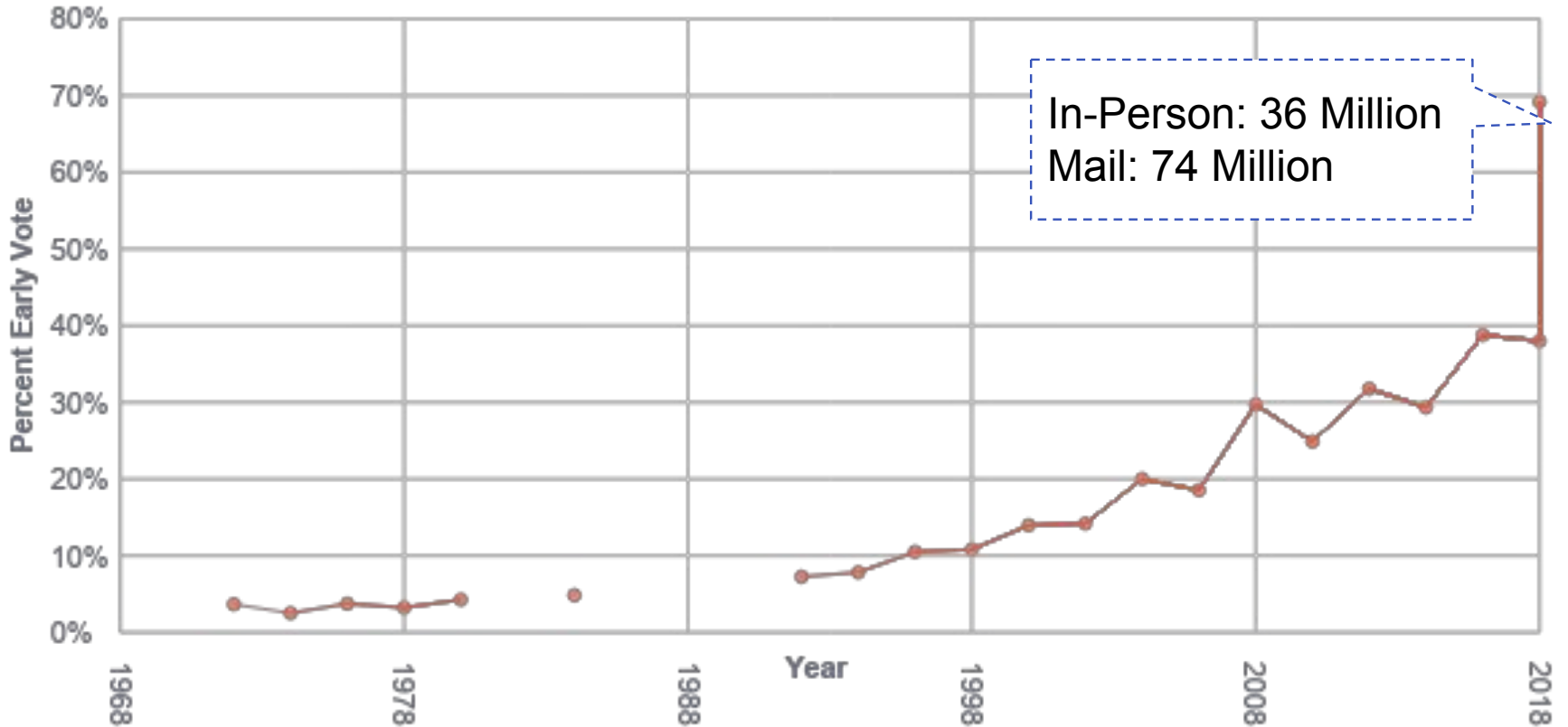
Primary Turnout Rate Change, 2016 to 2020



Getting People to Vote Early

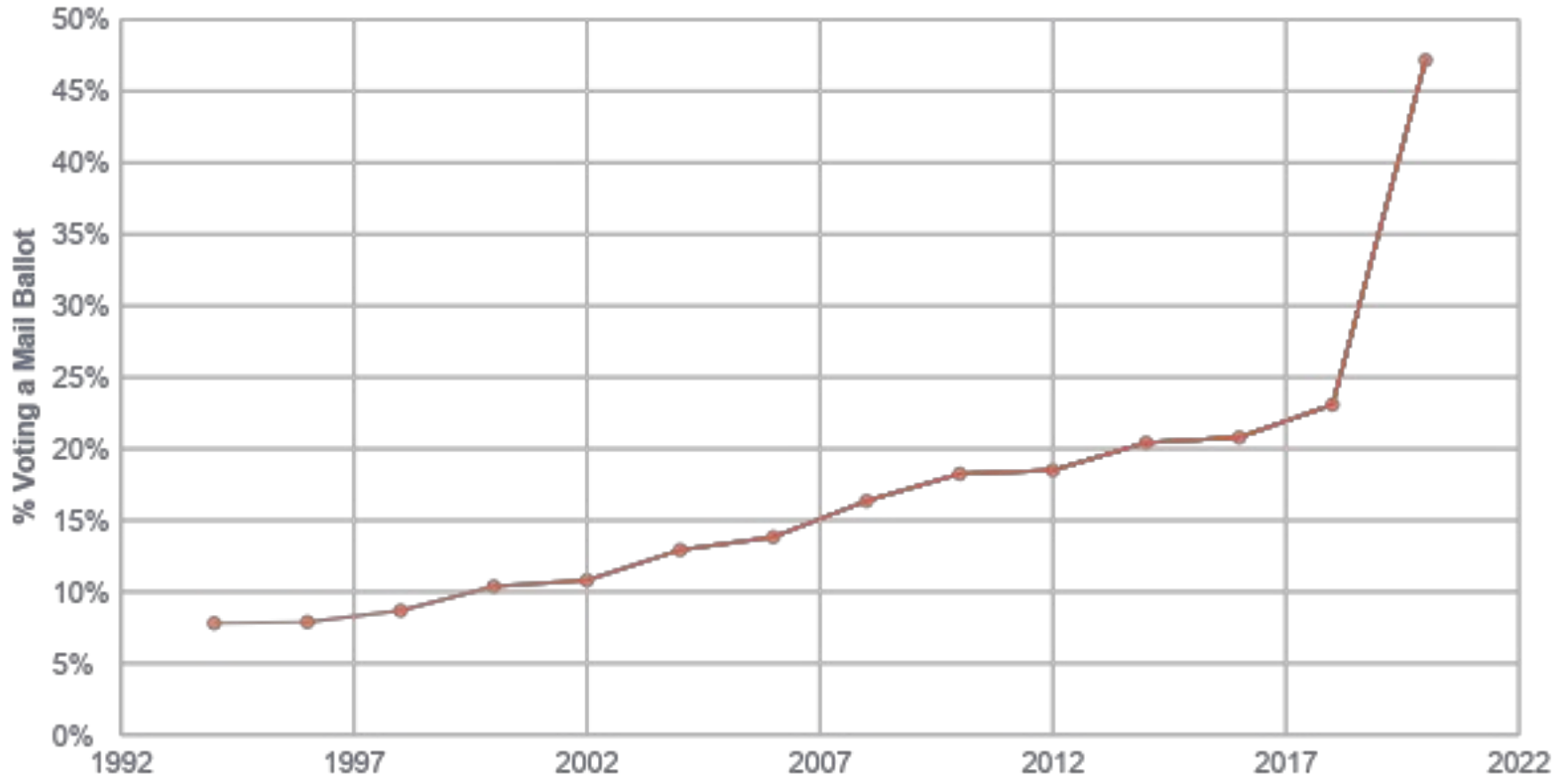
6

Percent of Voters Who Self-Report Casting Early Vote



Mail Balloting

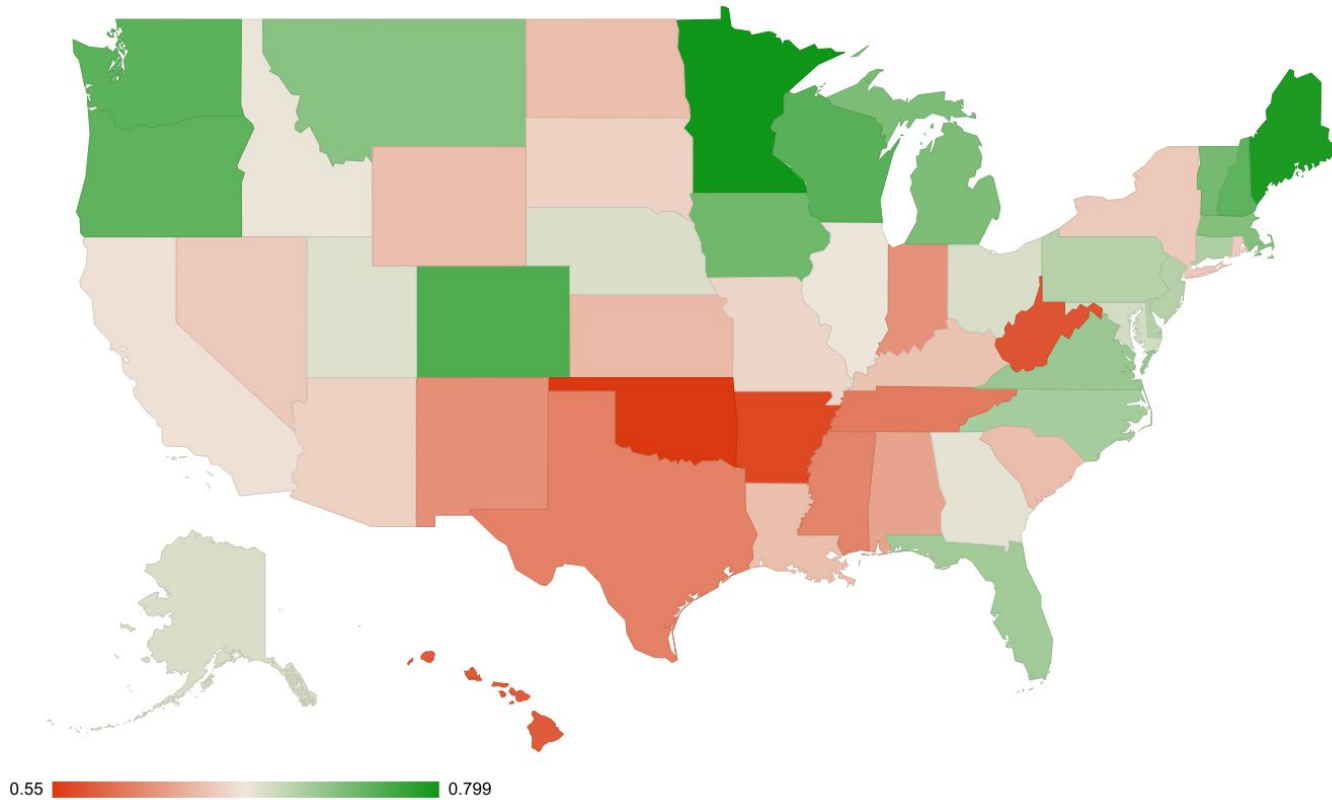
Percent of Voters Who Self-Report Casting Mail Ballot



Source: Census Bureau's Current Population Survey

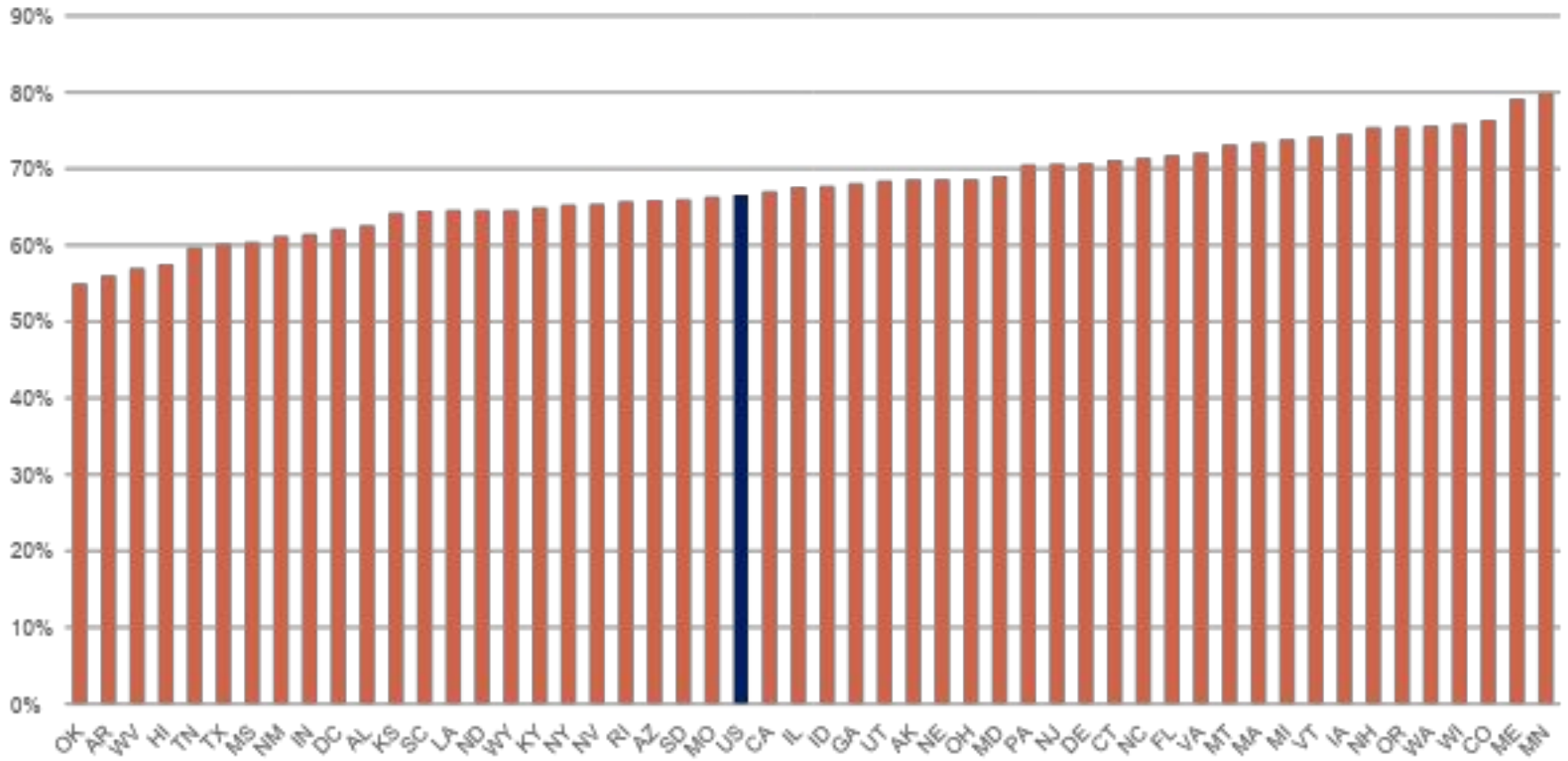
2020 State Turnout Rates

8



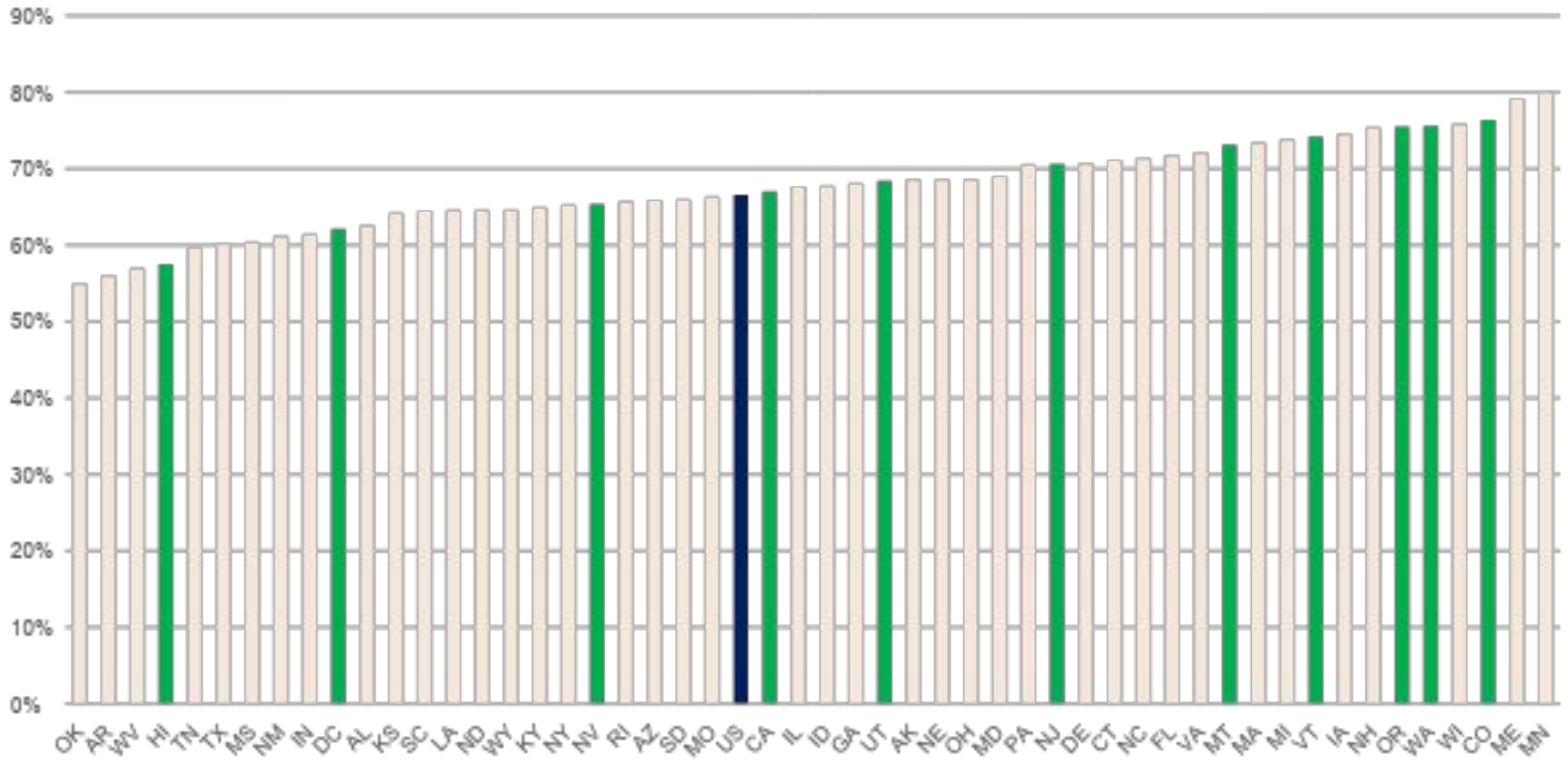
2020 State Turnout Rates

9



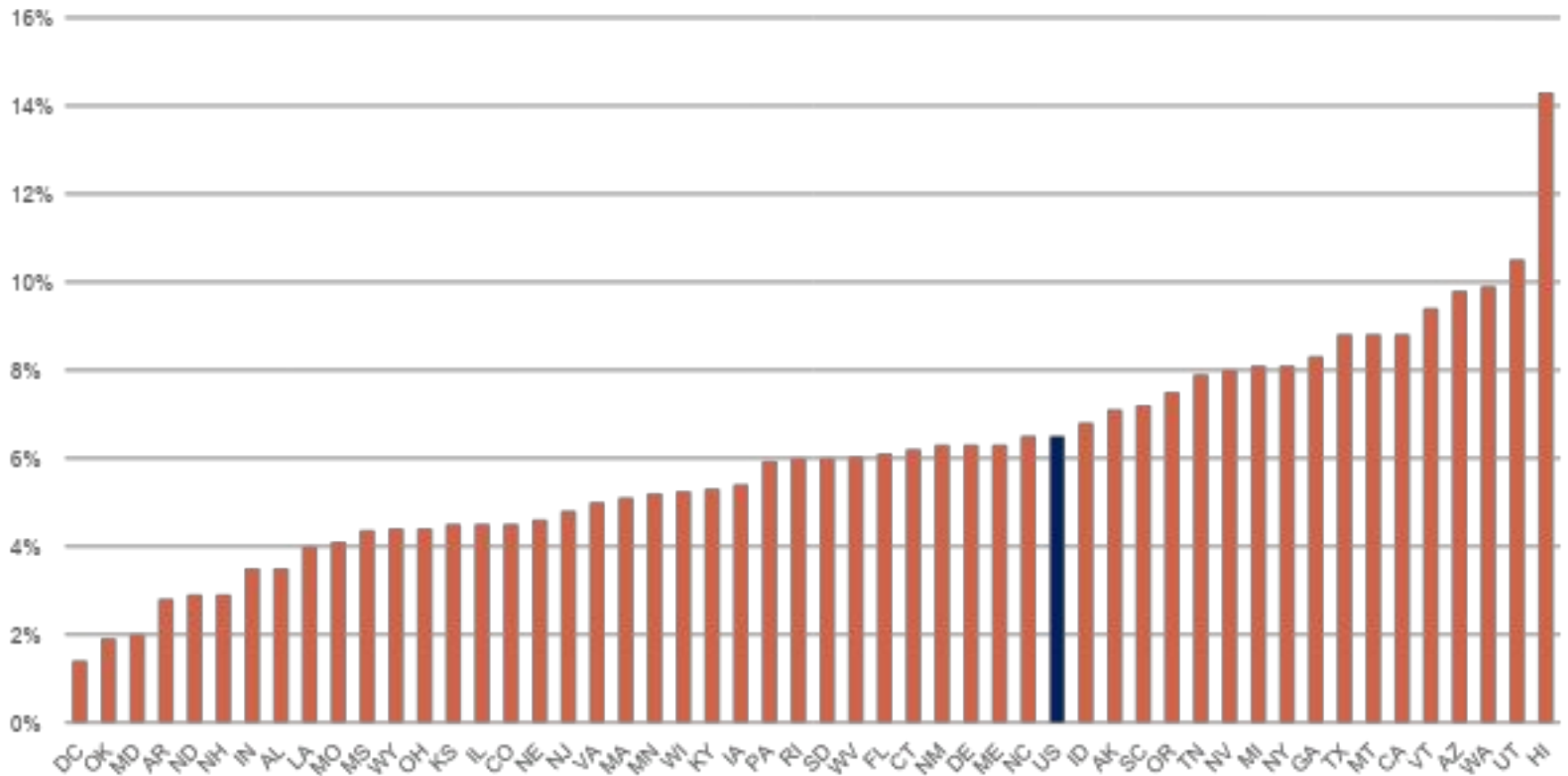
2020 State Turnout Rates – All-Mail Ballot States

10



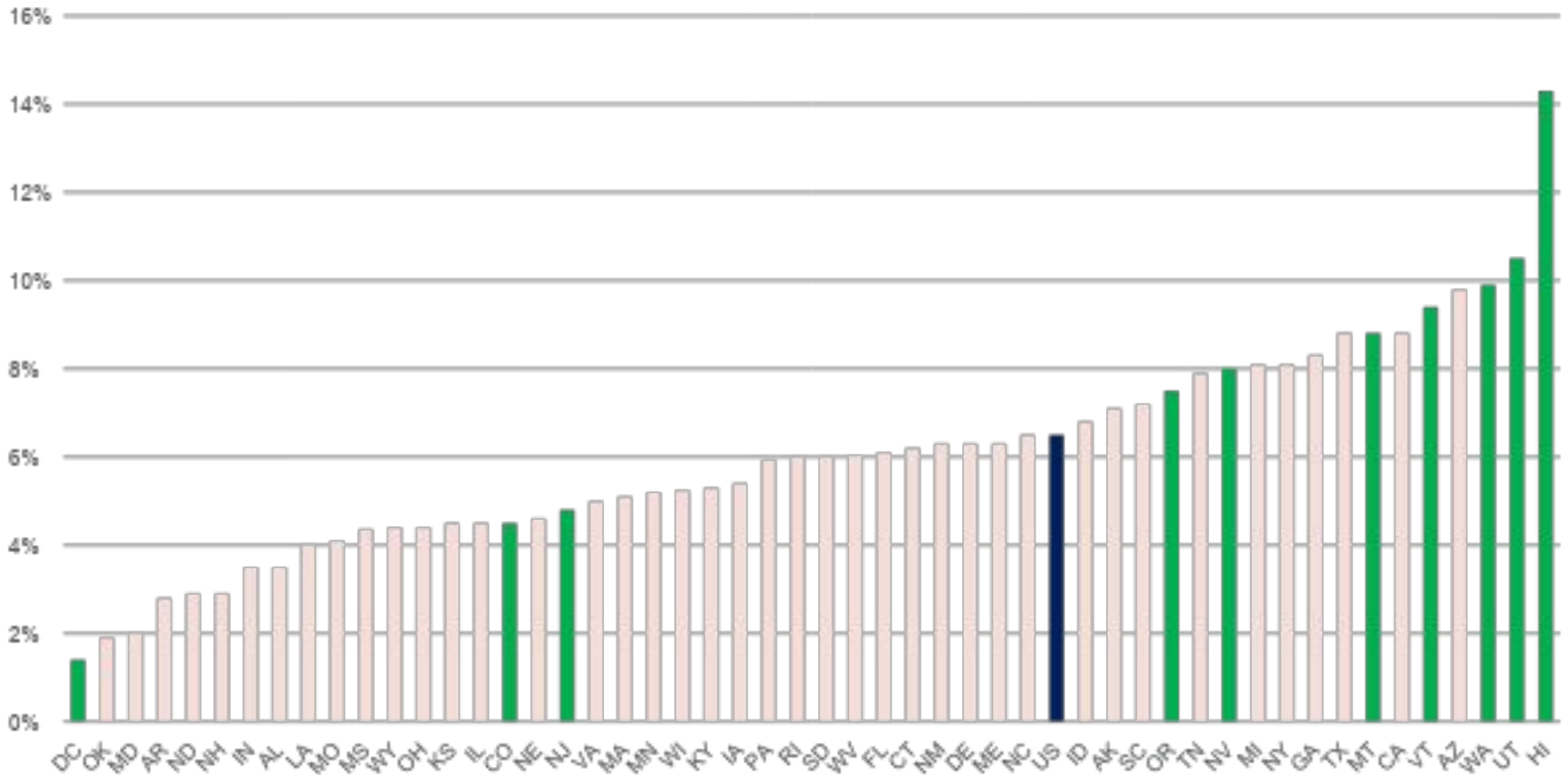
Turnout Rate Change 2016 to 2020

11



Turnout Rate Change 2016 to 2020 – All-Mail Ballot States

12



Turnout Rate Change 2016 to 2020 – Restrictive Mail States

13

