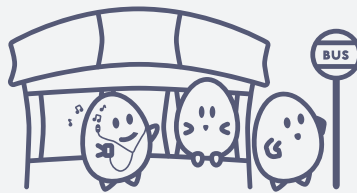
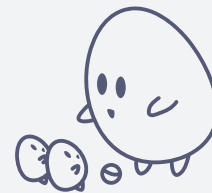


WHICH TWO SERVICES IMPACT YOU THE MOST?



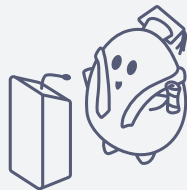
COMMUNITY PLANNING

PUBLIC TRANSIT, PARKS, ZONING,
SIDEWALKS, ROADS, SAFETY



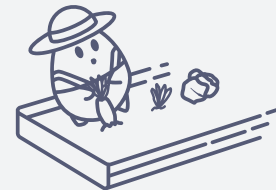
CHILDCARE

HEAD START, FAMILY PLANNING,
CHILDCARE VOUCHERS



EDUCATION

FREE LUNCH PROGRAM, ESL,
UNIVERSITY/COLLEGES, LIBRARIES



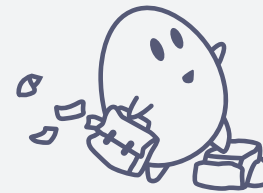
FOOD ACCESS

WIC, FOOD PANTRY, FOOD SAFETY,
LOCAL AGRICULTURE, FOOD STAMPS



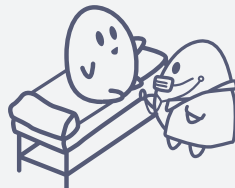
HOUSING

SECTION 8, HOMELESS SERVICES,
PUBLIC HOUSING, EVICTION SUPPORT



EMPLOYMENT

JOB TRAINING, LABOR LAWS,
SOCIAL SECURITY, UNEMPLOYMENT



HEALTHCARE

MEDICAID, DISABILITY SERVICES,
MEDICARE, MENTAL HEALTH



ENVIRONMENT

WATER/AIR QUALITY, WASTE
MANAGEMENT, ALTERNATIVE ENERGY

WHY VOTE?

**ELECTED OFFICIALS MAKE DECISIONS ABOUT ALL THESE SERVICES
BY VOTING, YOU CAN HAVE A SAY IN WHO MAKES THOSE DECISIONS**

**WHY WOULD YOU WANT TO VOTE AND HAVE A SAY IN WHO
IS MAKING DECISIONS ABOUT THOSE SERVICES?**

**WHAT QUESTIONS DO YOU HAVE ABOUT BEING ABLE
TO VOTE IN THE NEXT ELECTION?**

WHAT DID YOU LEARN?

This is a nonpartisan activity. We respect your privacy and will never tell you who to vote for or what party.