

# CONDUCTING A VOTER REGISTRATION DRIVE IN LOUISIANA



## ✓ VOTER REGISTRATION DEADLINES

- Paper applications must be received or postmarked by 30 days before Election Day.
- Online voter registration must be completed by 20 days before Election Day. If any deadline falls on a legal holiday, registration closes on the next day which is not a weekend day.
- Drives must turn in completed applications to the parish registrar within 30 days of their completion or by the registration deadline, whatever comes sooner.

## GETTING STARTED

**Training Requirement:** Louisiana does not require training for registration drives.

**Notification and Registration Requirements:** Louisiana does have a registration requirement for voter registration drives. Please contact the Secretary of State's office to inform them of your drive, complete a drive application, and obtain materials. Contact the SOS here: [www.sos.la.gov/ElectionsAndVoting/GetInvolved/OrganizeARegistrationDrive/Pages/default.aspx](http://www.sos.la.gov/ElectionsAndVoting/GetInvolved/OrganizeARegistrationDrive/Pages/default.aspx)

The Secretary of State's guide to best practices and laws for voter registration drives is located here: <https://www.sos.la.gov/ElectionsAndVoting/PublishedDocuments/07.31.24ThirdPartyRegistrationBestPractices.pdf>

Groups that only provide electronic access for individuals to directly access the online voter registration system do not need to complete a third party registration drive contact form, as long as they do not capture individual registrants' data. However, a group that prints and accepts registration forms from applicants who cannot submit the registration forms electronically must register and comply with relevant registration deadlines.

**Compensation Restrictions:** Do not pay registration drive participants based on how many registrations they collect. Do not offer an applicant any incentive of monetary value to register to vote.

## **Documentary Proof of Citizenship for Voter Registration:**

Louisiana has a new law that requires those registering to vote to provide proof of U.S. citizenship when submitting a voter registration application. Please contact your local election official for more information on this requirement. The law is currently the subject of litigation. Please check back for updates.

## OBTAINING APPLICATIONS

**State Form:** State mail-in voter registration applications may be obtained online or from the parish registrar.

- Online Applications: [sos.la.gov/ElectionsAndVoting/PublishedDocuments/ApplicationToRegisterToVote.pdf](http://sos.la.gov/ElectionsAndVoting/PublishedDocuments/ApplicationToRegisterToVote.pdf)
- Find your parish registrar: [voterportal.sos.la.gov/Registrar](http://voterportal.sos.la.gov/Registrar)

There are no limits on the number of forms that can be obtained.

**Federal Form:** The federal mail-in voter registration application may be used in voter registration drives: [eac.gov/voters/national-mail-voter-registration-form/](http://eac.gov/voters/national-mail-voter-registration-form/)

**Photocopying Blank Forms:** Blank applications may be photocopied and used in voter registration drives.



## HANDLING APPLICATIONS

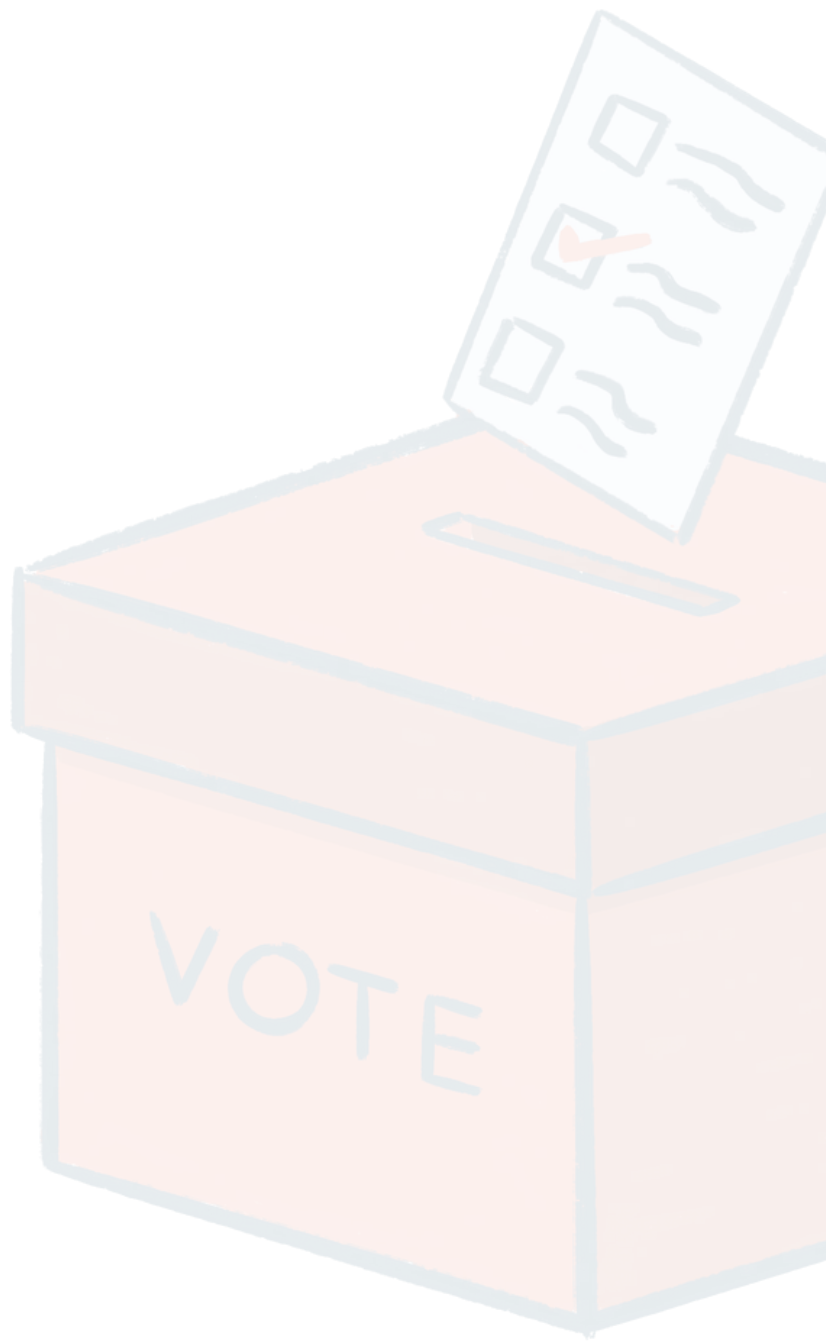
**Incomplete Applications:** It is illegal for canvassers/volunteers to fill out any information on another person's voter registration application, except when providing assistance to an individual entitled to assistance in accordance with the Election Code.

**Photocopying Completed Applications:** Other than for purposes other than fulfilling the person's duties relative to registration of voters as provided by law, it is illegal to copy or reproduce a voter registration application that has been submitted by an applicant.

**Submitting Completed Applications:** Completed registration applications collected during a drive must be submitted to the parish registrar of voters where the voter resides within 30 days of when the forms were completed or by the registration deadline, whichever is earlier. Failure to submit applications by this deadline is a punishable offense.

Federal voter registration applications can be delivered or mailed to: Secretary of State, Attention: Elections Division, P.O. Box 94125, Baton Rouge, LA 70804-9125.

However, it is preferable to submit them to the parish registrar of voters where the voter resides to avoid a delay in acceptance and processing.



**FOR MORE NONPARTISAN VOTER ENGAGEMENT RESOURCES, VISIT OUR RESOURCE LIBRARY**

[nonprofitvote.org/resource-library](https://nonprofitvote.org/resource-library)

---

*Fair Elections Center, its Campus Vote Project, and Nonprofit VOTE intend the information contained herein to be used only as a general guide. This document should not be used as a substitute for consultation with a licensed Louisiana legal professional.*

**Last updated May 2025**