

# CONDUCTING A VOTER REGISTRATION DRIVE IN NORTH CAROLINA



## ✓ VOTER REGISTRATION DEADLINES

- Applications must be received or postmarked at least 25 days before Election Day.
  - The State Board of Elections indicates drives must submit forms within 5 days or by the registration deadline, whichever comes first.
- Voters can register and vote the same day only during early voting and not on Election Day.

## GETTING STARTED

**State Guide:** Please refer to the BOE's guide on conducting a voter registration drive, which contains additional details and information regarding penalties for failure to abide by registration drive rules: [ncsbe.gov/registering/hosting-voter-registration-drives](https://ncsbe.gov/registering/hosting-voter-registration-drives)

**Training Requirement:** North Carolina does not require training for registration drives.

**Notification and Registration Requirements:** North Carolina does not have notification requirements for registration drives.

**Compensation Restrictions:** Do not compensate or be compensated for the number of registration forms collected/submitted. Quota systems in voter registration drives are illegal and subject to a class 2 misdemeanor.

## OBTAINING APPLICATIONS

**State Form:** To obtain voter registration forms in bulk for a registration drive, fill out and submit the following form on the State Board of Elections website: [ncsbe.gov/registering/hosting-voter-registration-drives/voter-registration-drive-supplies-request-form](https://ncsbe.gov/registering/hosting-voter-registration-drives/voter-registration-drive-supplies-request-form)

**Federal Form:** The federal voter registration application may be used in voter registration drives: [eac.gov/voters/national-mail-voter-registration-form](https://eac.gov/voters/national-mail-voter-registration-form)

State officials ask that organizations return all unused applications.

## HANDLING APPLICATIONS

**Incomplete Applications:** North Carolina prohibits changing a person's information on a voter registration form prior to delivering it to the County Board of Elections. All complete and incomplete forms must be submitted unaltered. Drives are prohibited from pre-marking party affiliation on the form unless the person receiving the form requested it. Any assistance filling out the form must be in the voter's presence and must be at the voter's request.

**Labeling Applications:** Do not place sticky notes or flags on any incomplete forms.

**Logging Applications:** State officials ask that drives maintain a log of which staff were responsible for which voter registration forms. Logs are requested to include the name of the person assigned to a batch and contact information to include a phone number, mailing address, and email.

**Photocopying Completed Applications / Retaining Information:** It is illegal in North Carolina to retain a registrant's signature, full or partial Social Security Number, date of birth, email address submitted under the voter registration laws, or driver's license number. Remove these before copying any application, and do not data-enter any information from the voter registration form.



FOR MORE NONPARTISAN VOTER ENGAGEMENT RESOURCES, VISIT OUR RESOURCE LIBRARY

[nonprofitvote.org/resource-library](https://nonprofitvote.org/resource-library)

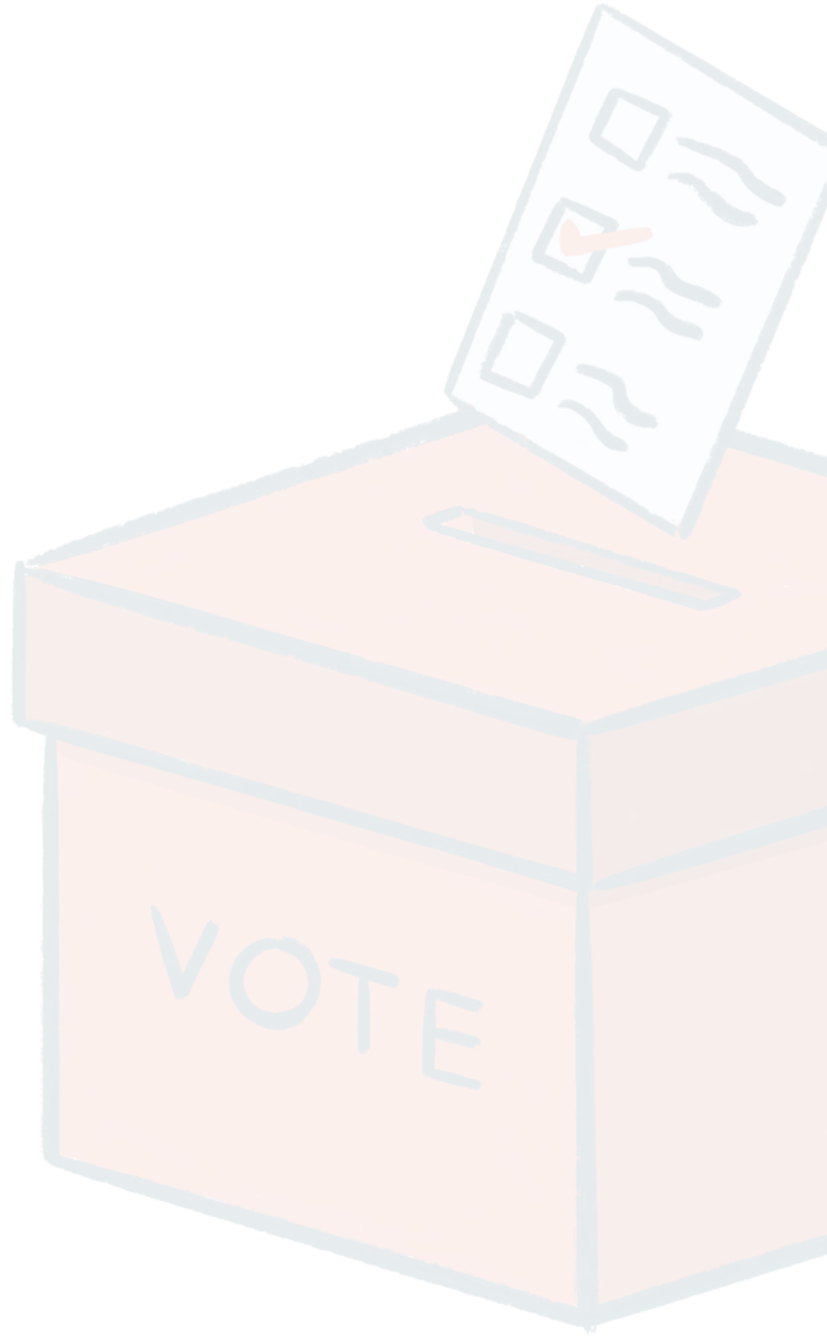


## HANDLING APPLICATIONS CONTINUED

**Submitting Applications:** The State Board of Elections indicates drives must submit forms within 5 days or by the voter registration deadline (25 days before an election), whichever comes first. Individual voters may register online with a valid NC Driver's License No. or DMV-issued ID No., but electronically captured signatures on registration forms including those generated by computer programs of third party groups are not accepted, except as provided by law for military and overseas voters. SBE requests that completed forms be submitted directly to the county office. Find your county office here: [vt.ncsbe.gov/BOEInfo](http://vt.ncsbe.gov/BOEInfo)

Applications satisfy the registration deadline if:

- If submitted by mail, they must be postmarked at least 25 days before the primary or election, except that any mailed application on which the postmark is missing or unclear is validly submitted if received in the mail not later than 20 days before the primary or election.
- If submitted in person, by fax, or emailing a scanned form, it must be received by the county board of elections by 5 p.m. (or a later time if the county board allows it) on the 25th day before the election. If the application is submitted by fax or email of a scanned document, a permanent copy of the completed, signed form must be delivered to the county board no later than 20 days before the election.



**FOR MORE NONPARTISAN VOTER ENGAGEMENT RESOURCES, VISIT OUR RESOURCE LIBRARY**

[nonprofitvote.org/resource-library](http://nonprofitvote.org/resource-library)

---

*Fair Elections Center, its Campus Vote Project, and Nonprofit VOTE intend the information contained herein to be used only as a general guide. This document should not be used as a substitute for consultation with a licensed North Carolina legal professional.*

Last updated May 2025